

# Stealth Cam

STC-IR1

User manual



**Tool Free Customer Support 1-877-269-8490**

**[www.stealthcam.net](http://www.stealthcam.net)**

Version 1.0

June/05

STC-IR1

For Customer Service or Warranty Information Call Toll Free

**877-269-8490**

Stealth Cam, LLC  
P.O. Box 211662  
Bedford, Texas 76095  
[www.stealthcam.net](http://www.stealthcam.net)

**Stealth Cam Limited Warranty**

Your Stealth Cam is covered by a One Year Limited Warranty on parts & labor from the date of purchase. The warranty covers defects in workmanship & materials. The warranty does not apply to units, which have been damaged or abused intentionally or unintentionally. Tampering with or altering the unit will void the warranty. Any unauthorized service will void warranty. Original sales receipt must be produced for any warranty service. Questions call 877-269-8490 any warranty service. For warranty service please call 1-877-269-8490.

[www.stealthcam.net](http://www.stealthcam.net)

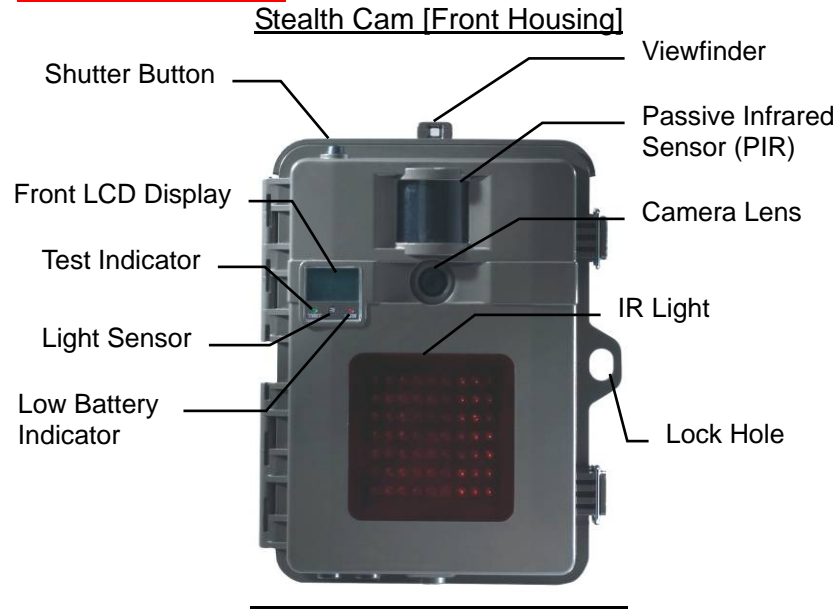
Toll Free 877-269-8490

## Manual Contents

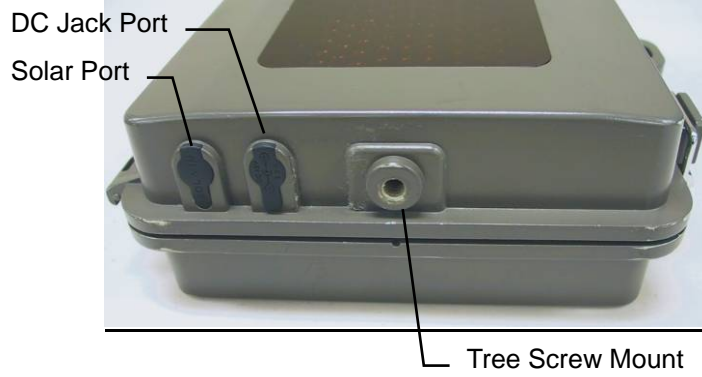
Camera overview	4
Memory Capacity	8
Camera kit contents	9
Battery and memory Installation	10
Set up and programming	13
Camera use	19
Manual Shooting Mode	25
Viewing & Deleting images	26
Technical Specs	39
General Information	41

# STC-IR1

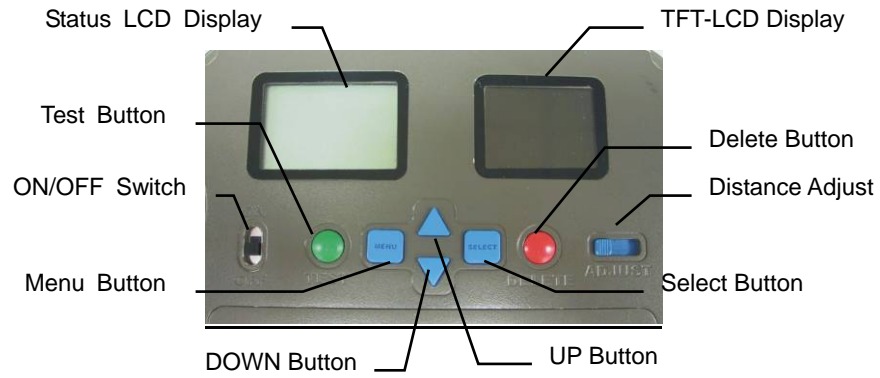
## Camera Overview



STC-IR1  
Stealth Cam [Bottom View]



STC-IR1  
Stealth Cam [Open View]



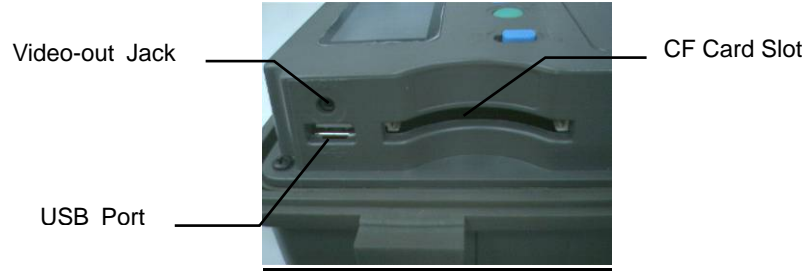
Battery Compartment  
Cover



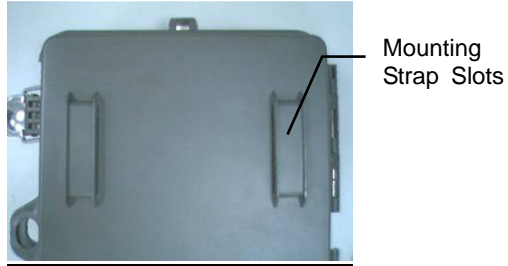
[www.stealthcam.net](http://www.stealthcam.net)

Toll Free 877-269-8490

STC-IR1  
Stealth Cam [Side View]



Stealth Cam [Back View]



[www.stealthcam.net](http://www.stealthcam.net)

Toll Free 877-269-8490

## STC-IR1 Memory Capacity

When "FULL"("F") is displayed on the front LCD screen this indicates that the memory is full.

High resolution - 5M 2560 X 1920  
Medium resolution - 3.1M 2048 X 1536  
Low resolution - 1.3M 1280 X 960  
AVI motion clip file - 320 x 240 (10 sec per motion clip)

	<b>32MB</b>	<b>64MB</b>	<b>128MB</b>	<b>256MB</b>	<b>512MB</b>	<b>1G</b>
<b>High</b>	21	42	85	170	341	682
<b>Med</b>	29	59	118	237	474	948
<b>Low</b>	59	119	23	476	953	1906
<b>AVI</b>	17	35	70	140c	281	562

Note: The Memory Capacity chart is for user's reference only. Actual number of image capacity is subject to the hues and color saturation of the picture shooting environment and the subject details.

## STC-IR1

### **Camera kit contents**

- Model STC-IR1 Infrared Digital Scouting Camera
- CDROM (Contains ArcSoft Photo Impression and camera driver)
- User Manual.
- 1.5 USB cable.
- 1.5 TV out cable for TV (RCA Jack).
- 1.5 TV out cable for handheld TV (Mini Jack).
- Strap.
- Tree screw with nut.
- Washer x 2.
- Lock plate

## STC-IR1

### Using Internal D Size Battery Power Option

1. Open the housing
2. Remove the battery cover.
3. Make sure camera power switch is in the OFF position.
4. Install 8 "D Size" batteries. "Premium quality alkaline batteries designed for digital cameras are recommended for optimum performance"
5. Replace battery cover.

### 12V Lead Acid external (Sold separately)

Power source spec recommended: 12V / 8AH Lead-Acid Battery

- Make sure camera is turned to OFF.
- Make sure the power cable to the lead acid battery is connected to the correct polarity.
- Firmly insert barrel plug in the 12V jack on bottom of camera.
- Only Stealth Cam accessory Lead-Acid Battery is recommended for this unit.
- Lead-Acid Battery performance is subject to weather conditions, Invisible Infrared Illuminator activity and user settings.

[www.stealthcam.net](http://www.stealthcam.net)

Toll Free 877-269-8490

## STC-IR1

### Memory Options

Your Stealth Cam STC-IR1 comes with 32MB of built in flash memory. The camera is also equipped with an expandable media card slot capable of accepting up to a 1GB Compact Flash card (sold separately). With no memory card inserted into the slot; the camera will use the built in 32MB memory. If a compact flash card is inserted into the slot then the camera will bypass the built in memory and utilize the compact flash memory. The front counter display will show the number of images on the built in memory unless the expansion card is inserted at which point the counter will only show the number of images on the expansion card.

- The camera should be in the **OFF** position when adding or removing memory cards.
- Make sure to format the CF card prior to use in STC-IR1. New cards are good to use straight from the package.
- Insert the memory card with the top of the card facing the front of the camera. Slide card all the way into the slot until it locks in place.
- To remove the card: Make sure the power is off. Simply pull the card out.

STC-IR1



Figure 2

## Set up and Programming

Familiarize your self with the location of the different buttons before programming the camera settings as it is helpful to look at the front LCD display while performing the various functions.

### Setting the continuous capture program

Continuous capture is the number of images the camera will record each time the PIR coverage area is intruded.

**Note:** Allow 3 seconds between pressing **MENU** button when navigating through the setting modes.

- Open the housing.
- Move the ON / OFF switch to ON. It will take approximately 5 seconds for the camera to power ON. After the camera has powered ON you have 30 second to begin programming before the camera enters detection mode.
- Once the camera has powered ON the LCD display on the front housing will read as illustrated in **figure 1**.

PIR on the display indicates the PIR (Passive Infrared Motion Sensor)

## STC-IR1



**Figure 1**

**Note:** During the process of each mode setting, it is normal to see the LCD screen figures blink.

- Press the **MENU** button four times. The "P" icon will start flashing. Using the "UP" arrow button press until you have reached the desired setting for the number of pictures.
- P1 (1 picture per triggering)
- P2 (2 pictures per triggering)
- P3 (3 pictures per triggering)
- AVI (10 second MPEG video)
- When you have entered the picture setting press **SELECT** to

[www.stealthcam.net](http://www.stealthcam.net)

Toll Free 877-269-8490

## STC-IR1

save your setting and enter the next programming mode - Time out setting. If you do not need to enter the time out setting mode press **MENU** to return to the main screen.

### **Setting the Time Out**

Time out is the amount of time the camera will sleep between triggering. This is a battery & memory saving feature.

- After following the directions in step one: You should see the "M" icon blinking. Using the "UP" or "DOWN" arrows; enter your desired time out period from 1 minute to 60 minutes. One-minute increments from 1 - 10, then five minute increments to 60.
- When you have entered the time out setting press **SELECT** to save your setting and enter the next programming mode: Time & Date.

### **Setting the Time & Date**

- After you have followed the directions from steps 1 & 2: You

[www.stealthcam.net](http://www.stealthcam.net)

Toll Free 877-269-8490

## STC-IR1

should see the year number blinking. Using the "UP or DOWN" arrows enter the correct year. Once you have entered the year press **MENU** the Month will start blinking.

- Using the UP or DOWN arrows enter the correct month. Once you have entered the month press **MENU**. The Day will start blinking.
- Using the "UP or DOWN" arrows enter the correct Day. Once you have entered the day press **MENU** the Hour will start blinking.
- Using the "UP or DOWN" arrows enter the correct Hour. Once you have entered the Hour press **MENU** the Minutes will start blinking.
- Using the "UP or DOWN" arrows enter the correct Minutes. Once you have entered the Minutes press **SELECT**. This will bring you to the main screen.
- If keep pressing **MENU** the setting sequence will repeat Year-Month-Day-Hour-Minute.

## STC-IR1

### **Setting the Resolution**

- When you are in the Time & Date setting and see the Year figure is blinking, immediately press **SELECT** this will bring you into the Resolution setting.
- When you enter the Resolution setting the small letter icon H (high) or M (medium) or L (low)] will be blinking. (see memory chart for resolution capacities)
- Using the "UP or "DOWN" arrows enter the desired resolution. Press **SELECT**
- This will bring you to the next setting mode. TV System (Video Signal)] or press **MENU** to return to the main screen.

### **Setting the TV System (NTSC / PAL)**

NTSC is the correct setting for all of North America. Your Stealth Cam STC-IR1 comes pre-programmed for NTSC.

- After following above steps to enter the Resolution setting, press **SELECT** will bring you into the TV System setting.
- When you enter the TV System setting either the small icon N  
[www.stealthcam.net](http://www.stealthcam.net) Toll Free 877-269-8490

## STC-IR1

or P will be blinking.

- Using the "UP" or "DOWN" arrows enter the correct TV system (N - NTSC or P - PAL).
- NTSC is the correct setting for all of North America.
- Press **SELECT** once you have entered the correct TV system. This will bring you back to the main screen.
- Slide the power switch to OFF.

### **Setting the PIR detection distance**

PIR effective distance range can be set from 6ft ~ 30ft (Near ~ Far)

- The Adjust button is used to adjust the distance from as close as 2 meters to as far as 9 meters.
- Make sure camera is turned to OFF.
- Adjust the switch to the desired effective distance range.
- Your camera is now set up and ready for use.

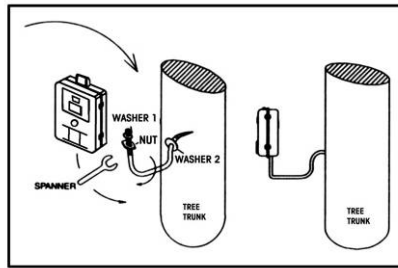
## STC-IR1

### Using the camera

Once you have completed the settings listed above, the camera is ready for use.

Mounting the camera with the supplied Tree Screw

- Hand twist the screw into the tree or post at the desired position.
- Attach the camera to the screw by turning the camera onto the mounting screw to the desired position.
- Tighten the stabilizer nut.

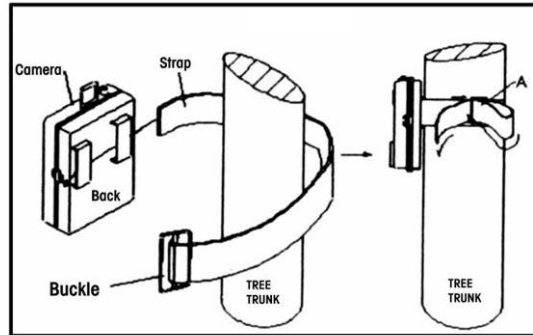


## STC-IR1

### **Mounting the camera with the supplied Strap**

Insert the strap through the strap slots on the rear housing.

Wrap the strap around the mounting surface. Secure the strap & tighten the buckle in order to secure the camera.





## STC-IR1

**Note:** In order to obtain proper weather resistance, please make sure that both door latches are securely locked in place.

### **Testing the cameras coverage area**

One of Stealth Cam's many features is the ability to test the coverage area.

- After mounting the camera; open front housing & slide the power switch to ON
- After the front LCD screen has powered ON, press the **TEST** button. (This must be done within 30 seconds or the camera will enter detection mode).
- Close the front housing.
- Walk around in front of the camera to see if you have mounted camera in the proper position. A green indicator light will blink on the front housing when you have intruded the coverage area.
- Adjust the camera position as needed & repeat testing until the desired coverage area is achieved.

## STC-IR1

- When you have completed the testing the coverage area there are 2 methods for exiting test mode:
  1. Open the front housing and press the **TEST** button to exit test mode. The camera will then enter sleep mode for 1 minute. After one minute the camera will power up and LCD screen will turn on. At this point you have 45 seconds to make any last minute adjustments. After the 45 seconds the green LED indicator will start blinking giving you one minute to leave the coverage area. The camera then enters PIR detection mode.
  2. After 5 minutes in TEST mode, the camera will then enter sleep mode for 1 minute. After one minute the camera will power up and LCD screen will turn on. At this point you have 45 seconds to make any last minute adjustments. After the 45 seconds the green LED indicator will start blinking giving you one minute to leave the coverage area. The camera then enters PIR detection mode.

## STC-IR1

### **Using the camera in PIR detection mode**

- Mount the camera to tree or other sturdy object using either the supplied tree screw or mounting strap (Please refer to the Mounting Suggestions section in this manual).
- Open the front housing & move the switch to the ON position. At this point you have 30 seconds to make any program adjustments.
- After 30 seconds the camera's green test light will begin blinking.

This is your indication to leave the coverage area within one minute.

- After one minute the camera will be in Detection mode.
- Based on your program the camera will take between 1-3 pictures or a 10 second AVI video. The camera will then time out between 1 - 60 minutes also based on your setting.

**Note:** **The time between motion detection and the camera taking pictures may vary due to lighting conditions, program setting and battery power level.**

- The **IR lighting** will only activate in low light conditions. (Below

## STC-IR1

50Lux)

**Note:** IR lighting, Photo distance is up to 30ft. Video distance is 26ft.

### Manual Shooting Mode

- Turn the camera on.
- When the Front LCD screen turns on press the **MENU** button once.
- The camera is now ready to be used as a hand held point & shoot camera.

## STC-IR1

### Viewing and deleting images

The Stealth Cam STC-IR1 offers the user three different options for viewing the images.

**Note:** Images captured in daytime or high lux environment will be full color. Images taken in nighttime or low lux environment with IR lighting device activated will be black & white.

#### Viewing the images on camera 1.8" TFT LCD screen

- Turn the camera on
- Press the MENU button twice. A TV icon will appear on the front LCD screen.
- Within a few seconds the first image will appear on the inside TFT display. At first the image will appear distorted. After 2 seconds the image will clear up.
- At the bottom of the screen will be an information bar that indicates what picture out of the total stored in memory you are viewing.

Also displayed are the battery level of the camera and the resolution of the image.

## STC-IR1

To view the time & date stamp press the button. The time & date will now appear on every image viewed.

- Using the UP and DOWN buttons navigate through the images one at a time.
- To view the images as a slide show press **SELECT** a second time and the camera will begin to scroll from image to image every 3 seconds.
- To stop the slide show press **SELECT** again.

### **Viewing the images on a Handheld LCD TV video monitor**

- Turn the camera off.
- Attach the appropriate cable to the video out jack on the camera.
- Insert the other end into the video in jack on the LCD TV Monitor.
- Turn on the LCD TV Monitor then turn on the camera.
- Press the **MENU** button twice. A TV icon will appear on the

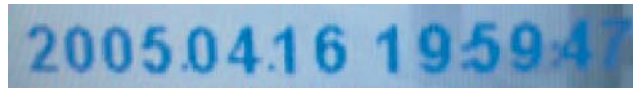
## STC-IR1

Front LCD screen on camera. Within a few second the first image will appear on the LCD TV Monitor. At first the image will appear distorted. After 2 seconds the image will clear up.

- At the bottom of the screen will be an information bar that indicates what picture out of the total stored in memory you are viewing. Also displayed is the battery level of the camera and the resolution of the image.



- To view the time & date stamp press the **SELECT** button. The time & date will now appear on every image viewed.



- Using the UP and DOWN buttons navigate through the images one at a time.

## STC-IR1

- To view the images as a slide show press **SELECT** a second time and the camera will begin to scroll from image to image every 3 seconds.
- To stop the slide show press **SELECT** again.

### **Viewing the images on your home TV equipped with an RCA input jack.**

- Turn the camera off.
- Make sure to switch to video in mode on the TV set. (See your TV owner's manual for directions).
- Attach the appropriate cable to the video out jack on the camera. Insert the other end into the RCA video in jack on the home TV.
- Turn on the Monitor then turn on the camera.
- Press the **MENU** button twice. A TV icon will appear on the Front LCD screen. Within a few second the first image will appear on the TV. At first the image will appear distorted. After 2 seconds the image will clear up.
- At the bottom of the screen will be an information bar that

## STC-IR1

indicates what picture out of the total stored in memory you are viewing. Also displayed is the battery level of the camera and the resolution of the image.



- To view the time & date stamp press the **SELECT** button. The time & date will now appear on every image viewed.



- Using the UP and DOWN buttons navigate through the images one at a time.
- To view the images as slide show press **SELECT** a second time and the camera will begin to scroll from image to image every 3 seconds.
- To stop the slide show press **SELECT** again.

## STC-IR1

### Viewing the images on your computer using the provided software

Minimum System requirements and compatibility:

Operating System	Win 98SE, Win 2000, Win Me, Win XP
CD ROM Drive	16X
Microprocessor	Intel Pentium MMX 200MHz
Color Display Monitor Resolution	800 x 600(1024 x 768 Recommended )
RAM	64MB
Hard Disk Space	100MB

#### One USB port

- Insert the disc provided with the camera.
- Follow the on screen instructions to install the software and camera driver.
- To download the images simply plug one end of the USB cable into an available USB port on your computer.

[www.stealthcam.net](http://www.stealthcam.net)

Toll Free 877-269-8490

### STC-IR1

- Then with the camera in the OFF position; plug the other end of the USB cord into the camera. The camera will automatically power ON and display a USB icon on the Front LCD screen.  
**See figure 3.**



**Figure 3**

- A download window will then appear on your computer screen displaying the number of images in the camera. **See figure 4.**

## STC-IR1



**Figure 4**

- Select the images you want to download and click on download box on your computer screen.
- The default setting will download the images you selected to a file folder in My Documents with the date of the download as the file name.
- The images can then be opened directly using your computers built in image viewer or through the supplied ArcSoft Photo

## STC-IR1

Impression software. This easy to use software will allow you to enhance, manipulate and customize your images. For instructions on how to use this software open the program and then click on the in the upper right hand corner of the ArcSoft Photo Impression window.

### Deleting Images from memory

The Stealth Cam STC-IR1 offers the user the ability to delete one image at a time or all at once.

**Note:** If you have a Compact Flash memory card installed in the memory card slot the images you select to delete will be deleted from that card. If there is no card installed in the slot then the images you select to delete will be deleted from the built in memory.

### Deleting image one at time

- While viewing the images on the 1.8" TFT screen, optional TV Stealth Cam Video Monitor or home TV, you can delete the [www.stealthcam.net](http://www.stealthcam.net) Toll Free 877-269-8490

## STC-IR1

images one at a time.

- To delete the images one at a time press the **DELETE**.
- You will be prompted on screen with the following message.
  - **Delete Image?**
  - **Yes**
  - **No**
- Using the UP or DOWN arrow enter Yes to delete the image or No to keep it. Press the **DELETE** button. Continue to scroll through the images and delete them as needed.

### Deleting images all at once

- Turn the camera ON.
- Press the **MENU** button three times. You will see a blinking icon on the LCD screen that is a box with an X through it.



## STC-IR1

- Press either the UP or DOWN button. The X box will stop blinking.
- Press the **MENU** button to confirm delete. This will delete all the images in memory.

### **Precautions**

- The camera is designed to be weather resistant. Never attempt to immerse the unit into water or any other liquid. This will damage the unit and void the warranty.
- Do not drop the camera.
- Do not mix new and old batteries
- Avoid touching the camera lens and PIR lens
- Do not attempt to open the camera for unauthorized service. This could cause serious damage to the unit and will void the warranty.
- Remove batteries when camera is not in use for long periods of time.

### **Directions for using the Stealth Cam lock plate**

[www.stealthcam.net](http://www.stealthcam.net)

Toll Free 877-269-8490

## STC-IR1

The Stealth Cam locking plate is an accessory designed to aid the user in securing the camera to its mounting area. The lock plate is intended to be used with a padlock, chain and / or cable.

**Step 1** Mount the Camera. Mount the camera using either the supplied strap or the accessory tree screw.

**Step 2** Insert the Lock Plate.

When Using the Strap: Insert the lock plate between the strap & back camera housing through the strap slots. When Using the Tree Screw: Insert the lock plate through the strap slots.

**Step 3** Install Cable or Chain. Insert the cable or chain through one hole of the lock plate. Wrap the chain or cable around the front of the camera housing being sure not to obstruct the camera lens, flash or PIR sensor. Then insert the chain or cable through the second hole on the lock plate. Tighten the cable or chain snug around the camera & mounting surface. Using a pad lock secure the chain or cable behind the mounting surface.

### **Precautions:**

The Stealth Cam lock plate is meant to be used in coordination with a

[www.stealthcam.net](http://www.stealthcam.net)

Toll Free 877-269-8490

## STC-IR1

user supplied lock, chain or cable. It is designed to be a theft deterrent. Stealth Cam does not guarantee the lock plate will prevent theft or loss of property.

Padlock, Cable or Chain not included.

## Technical Specifications

### Camera Features and Specification

- Image sensor: 5.0 mega-pixels RGB color or B&W in IR activity
- Built in 1.8" Color TFT display with backlight.
- Built in 1.8" B& W LCD programming screen
- Built in 32M flash memories for image storage
- External memory support: CF memory card up to 1.0GB
- Resolution Options: 1.3M, 3.0M, 5.0M
- 4 Capturing Options: Manual, Single, Continuous, AVI
- Image performance for video stream: 10fps in 320 x 240 pixels, approx 10 seconds per section
- Auto white balance and auto expose
- 63 IR emitters
- Real time clock for date and time stamping
- 4 digits LCD Image counter

[www.stealthcam.net](http://www.stealthcam.net)

Toll Free 877-269-8490

## STC-IR1

- Battery low indicator
- Green Test LED indicator
- TV out support for NTSC and PAL system
- Focusing: 6 feet to Infinity
- High precision 6G glass lens
- Effective viewing Angle: 52 degree.
- PIR detection angle 48 deg.
- Adjustable PIR detection range up to 30 feet.
- Low power consumption:
  - Standby current: < 5mA.
  - Capture current <150mA
- Interface type: USB 1.1
- Power: D size alkaline Batteries x 8
- External power: Solar and 12 volts battery pack.
- Image format: Standard JPEG. And Motion JPEG (AVI)  
[www.stealthcam.net](http://www.stealthcam.net) Toll Free 877-269-8490

**General Information**

**Storing conditions**

- Operating Environment: 14 to 104 deg F (--10 to 40 deg C).  
20-85% relative humidity, non-condensing.

**Special care instructions!!**

- The camera is designed to be weather resistant. Never attempt to immerse the unit to water or any other liquid. This will damage the unit and void the warranty.
- Use a soft lens cloth for cleaning lens. Avoid touching lens with fingers.
- Remove dirt or stains with a soft cloth dampened with water or neutral detergent. Keep the STC-IR1 cam in a dry and cool dust-free environment or container when it is NOT used.
- Take the batteries out, when the STC-IR1 cam is NOT to be used over a long period.

## STC-IR1

- Avoid dropping the STC-IR1 cam on to hard ground. Do not disassemble the STC-IR1 cam.
- Do not mix new and old batteries.
- Do not open the camera for unauthorized service. This could cause serious damage to the unit and will void the warranty.

This camera is a precision electronic device. Do not attempt to service this camera yourself, as opening or removing covers may expose you to dangerous voltage points or other risks.